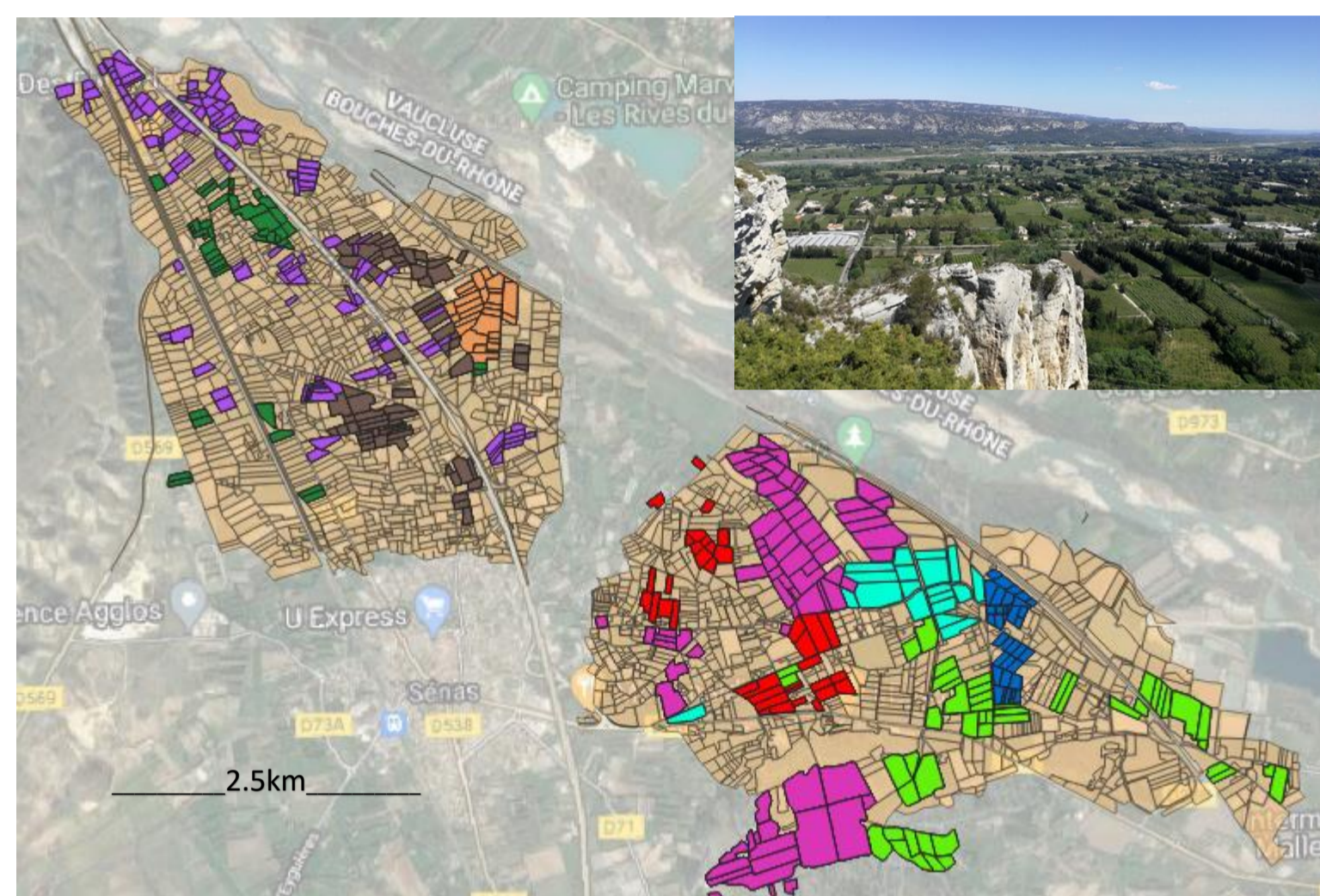




## Map of the study area



## Citizen Science and training

### Citizen science and farmer training:

#### In 2022 :

- Demo and webinar with farmers & advisers

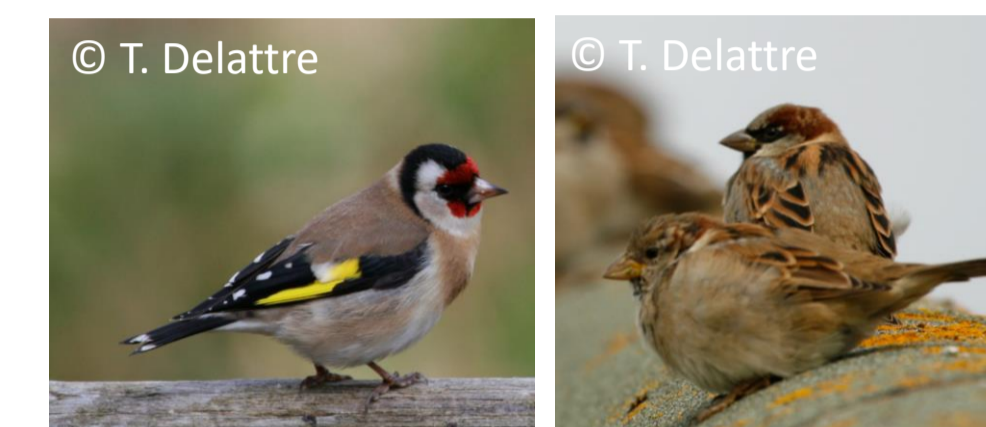


#### In 2023 :

- Record of occupation of bat boxes with farmers
- Observation of pest natural regulation with farmers
- Observation of bat boxes with citizens

## Data Collected in 2022

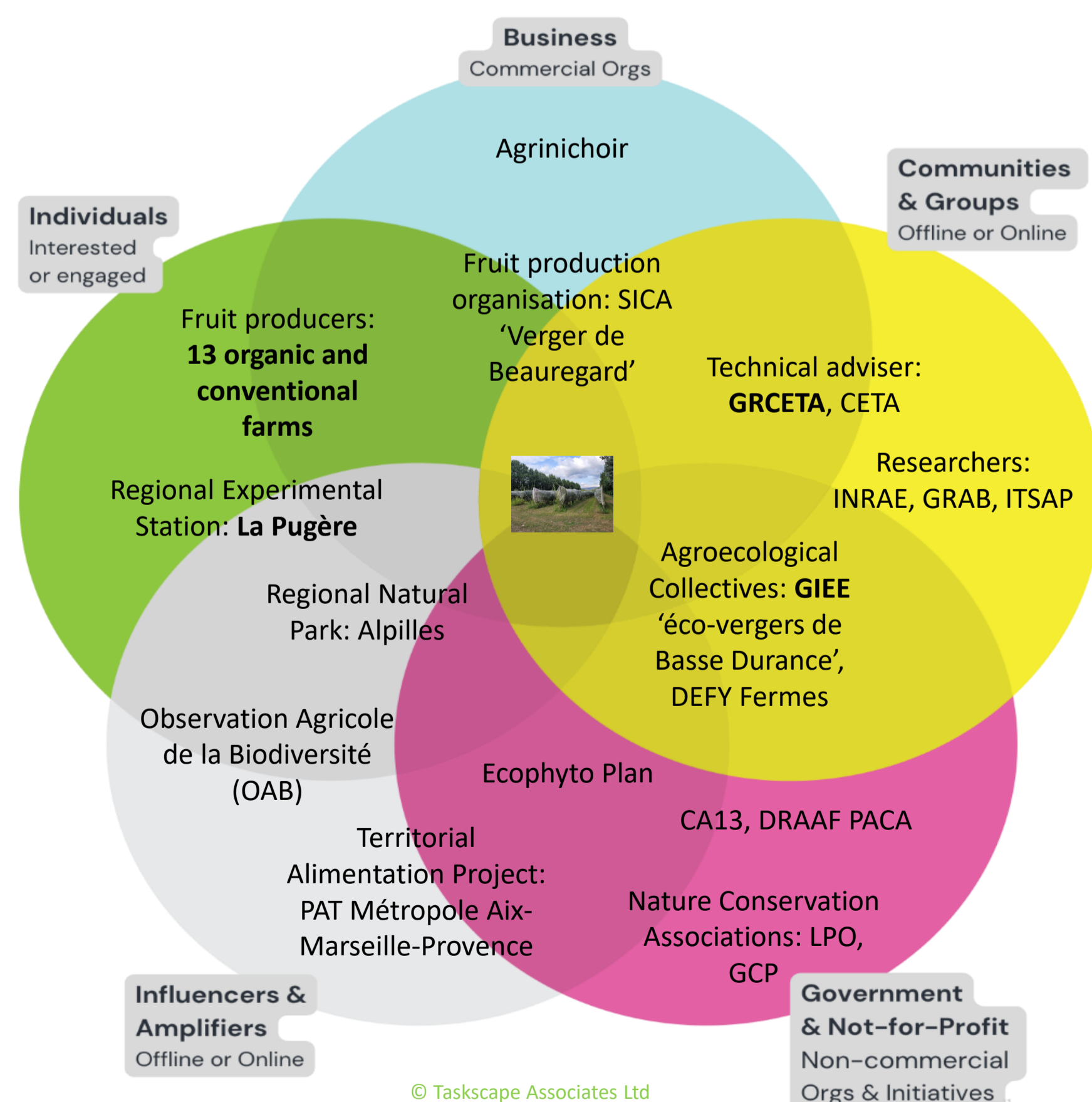
**Birds:** 16 transects including 4 external controls in a total of 13 farms  
Two sessions (Marsh and May)  
Transect length : 500 m  
Dataset completed



**Pollinator:** 16 transects including 4 external controls in a total of 13 farms  
Four sessions (from May to August, each month)  
Transect length : 500 m  
Dataset completed

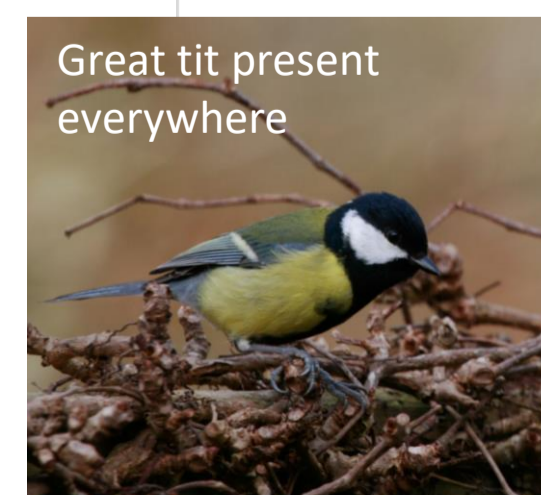
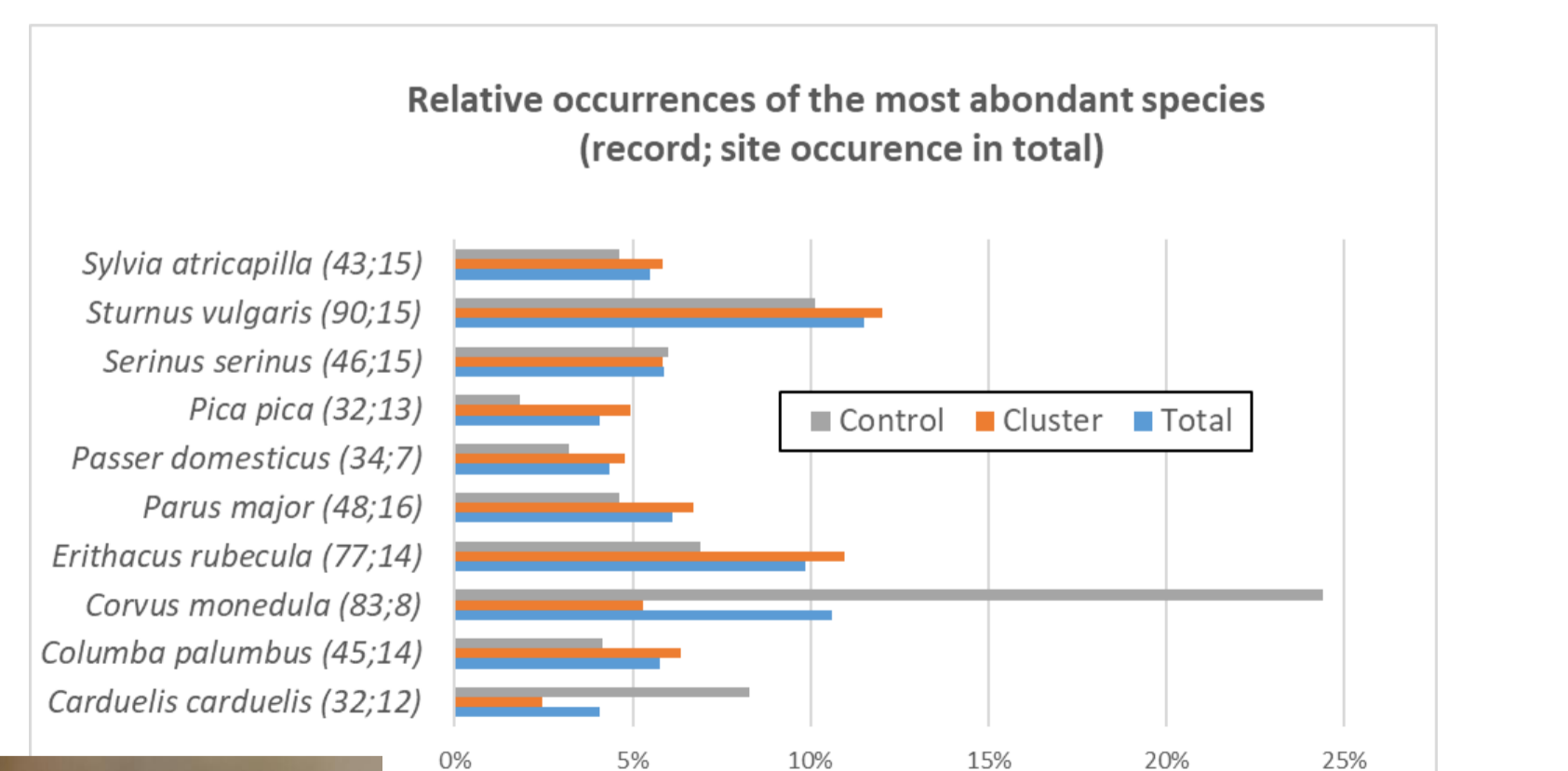


## Our Farmer Cluster network

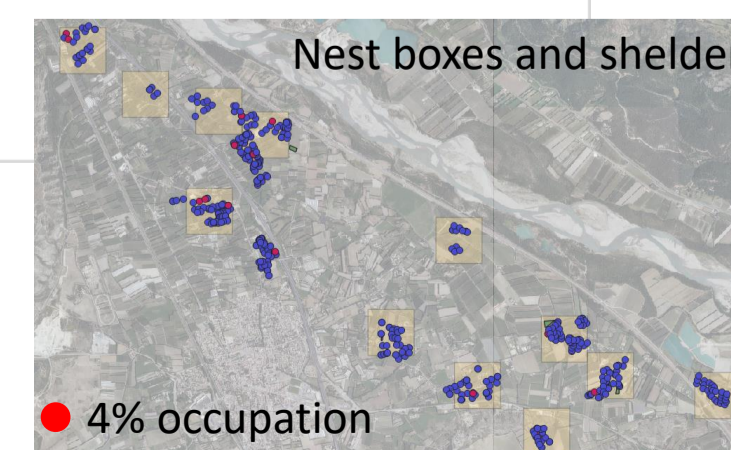


## 2022 Monitoring Results, Snapshot on bird diversity

38 species, 782 records in total (Marsh and May Sessions)  
8 to 29 species per transect per session



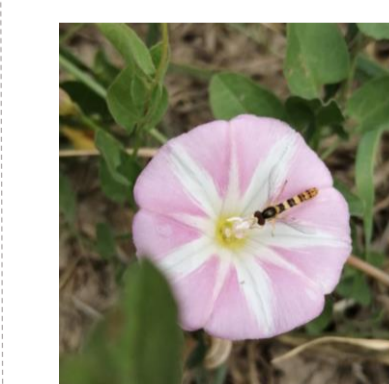
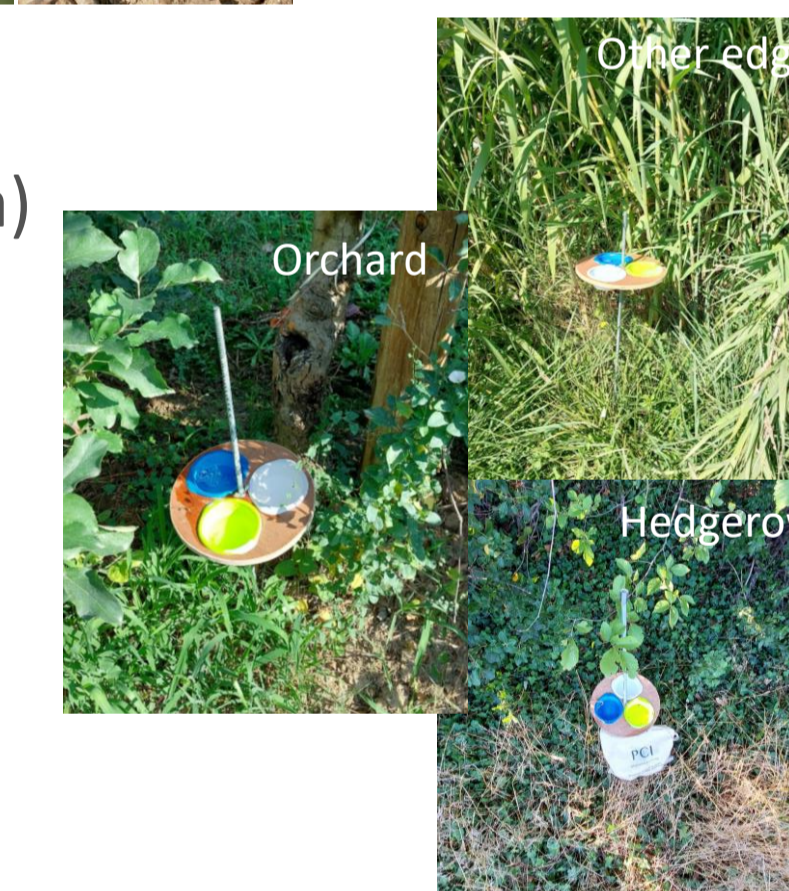
Great tit present everywhere



Nest boxes and shelders

4% occupation

**Pan traps:** 48 pan traps in 16 squares (25ha) including 12 controls in a total of 13 farms  
Four sessions (from May to August, each month)  
Identification not completed



**Vegetation:** 48 transects including 12 controls in a total of 13 farms  
Two sessions (April and July) How many times were surveys done and when?  
Transect length : 20m  
Dataset completed